

| Parameter | Symbol | Value | Unit |
|--------------------------------------|-----------|---------|------|
| Storage junction temperature range | T_{stg} | -40-150 | |
| Operating junction temperature range | T_j | -40-1 | |

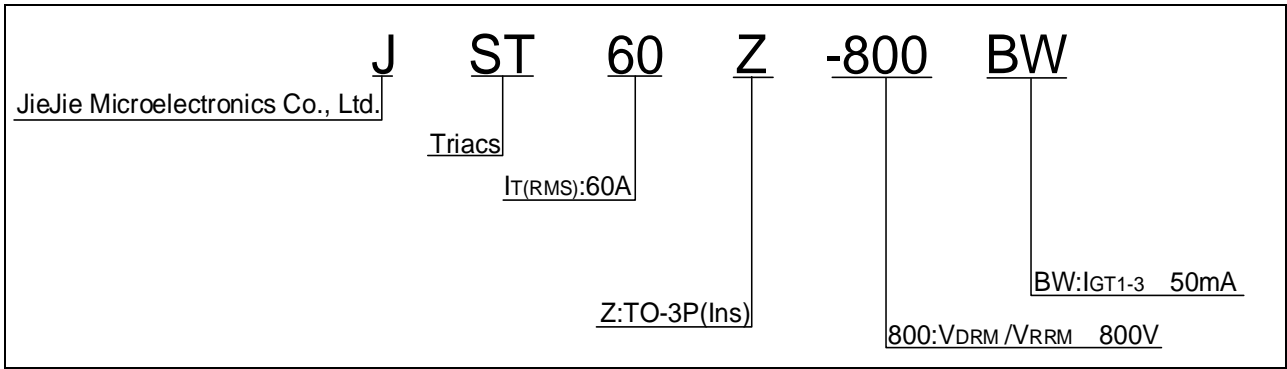
| | | | |
|--|----------|----|----|
| Peak gate power | P_{GM} | 10 | W |
| Peak pulse voltage ($T_j=25$; non-repetitive,off-state;FIG.7) | V_{pp} | 2 | kV |

ELECTRICAL CHARACTERISTICS($T_j=25$ unless otherwise specified)

| Symbol | Test Condition | Quadrant | Value | | Unit |
|----------|-------------------------------------|----------|-------|-----|------|
| I_{GT} | $V_D=12V R_L=33$ | - - | MAX. | 50 | mA |
| V_{GT} | | - - | MAX. | 1.3 | V |
| V_{GD} | $V_D=V_{DRM} T_j=125$ $R_L=3.3k$ | - - | MIN. | 0.2 | V |

I_L I_{G-N}

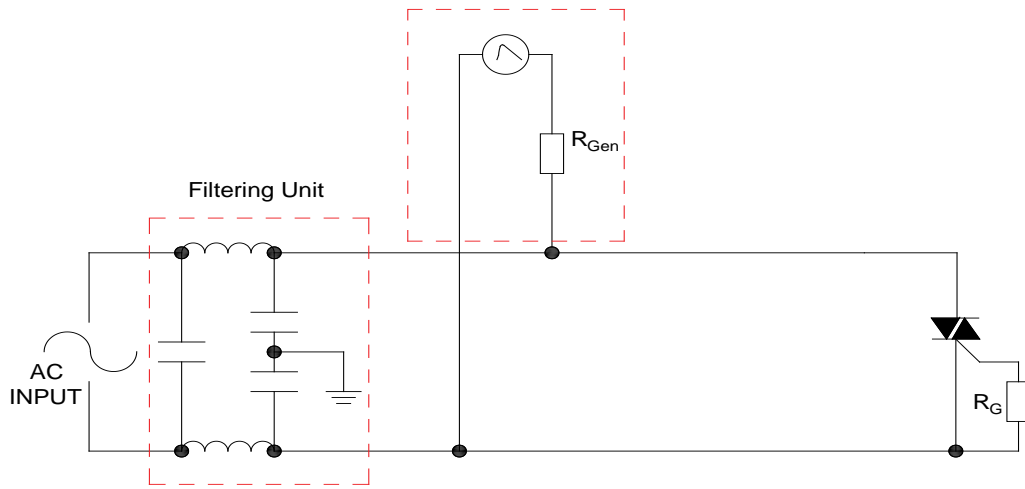
ORDERING INFORMATION



JST60Z-800BW

FIG.7 Test circuit for inductive and resistive loads to IEC-61000-4-5 standards

IEC61000-4-5 Standards
Surge Generator



LEAD FORMING AND SOLDERING

Refer to the application note “Assembly Instructions for Thyristors in Through-hole Package” released by JieJie Microelectronics

ORDERING INFORMATION

| Order code | Voltage $V_{DRM}/V_{RRM}(V)$ | IGT(mA) | Package | Base qty. (pcs) | Delivery mode |
|---------------------|---------------------------------|-----------|-------------------|--------------------|------------------|
| | | - - | | | |
| JST60Z-800BW | 800 | 50 | TO-3P(Ins) | 30 | Tube |

Document Revision History

| Date | Revision | Changes |
|------|----------|---------|
|------|----------|---------|

Apr.

PACKAGE MECHANICAL DATA



