



JST41T-1600BW 40A TRIAC

Rev.A.1.0

DESCRIPTION:

The JST41T-1600BW triac is suitable for general purpose

AC switching. It can be used as an ON/OFF function2 Tw 0eUT(i)6id [hg)10 (e4)12C s (or)6e su(f



JST41T-1600BW

Peak gate power	P_{GM}	40	W
Peak pulse voltage ($T_j=25$; non-repetitive,off-state;FIG.7)	V_{pp}	1.2	kV

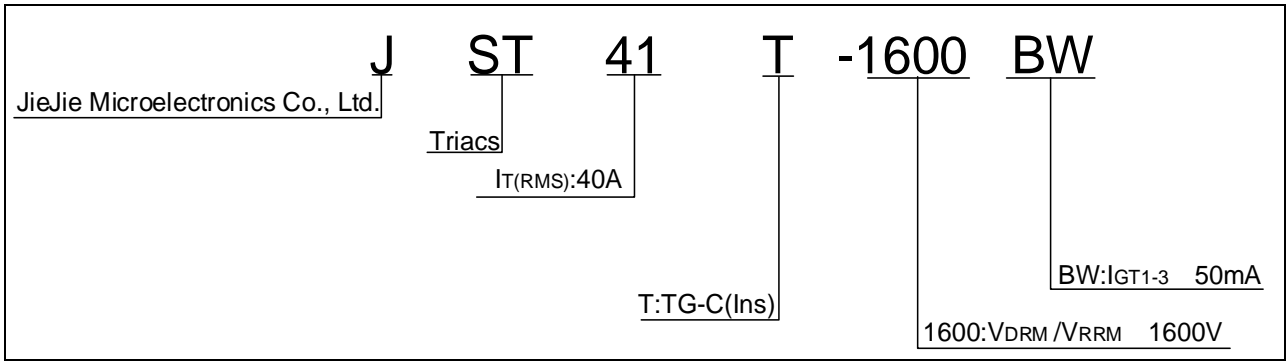
ELECTRICAL CHARACTERISTICS($T_j=25$ unless otherwise specified)

Symbol	Test Condition	Quadrant	Value	Unit
--------	----------------	----------	-------	------

I_{GT}

Symbol

ORDERING INFORMATION



MARKING

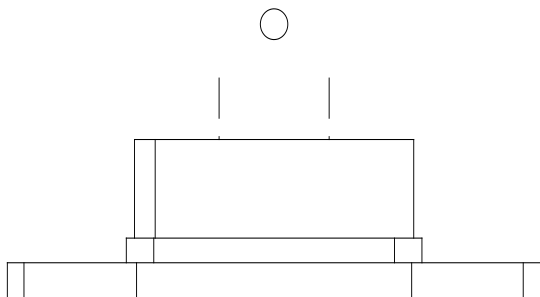
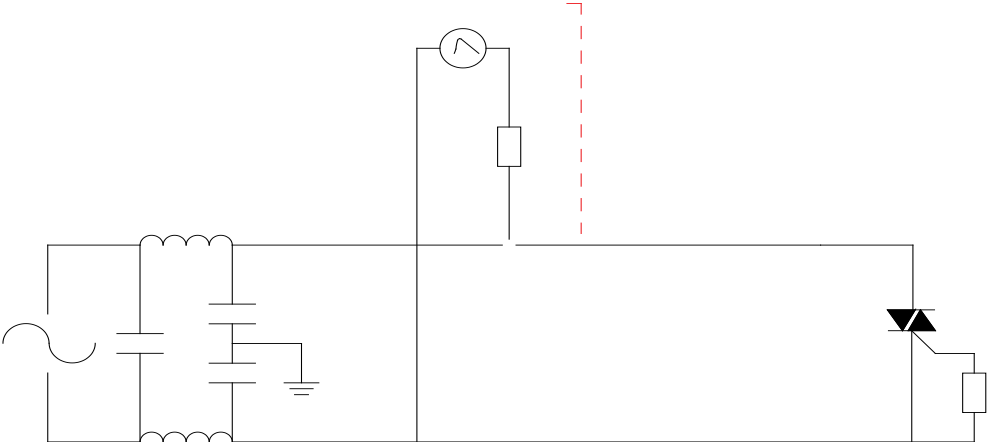


FIG.1: Maximum power dissipation versus RMS on-state current

FIG.2: RMS on-state current versus case temperature

FIG.7 Test circuit for inductive and resistive loads to IEC-61000-4-5 standards



ORDERING INFORMATION

PACKAGE MECHANICAL DATA 封裝

