



## JST24F-800CW 25A TRIAC

Rev.A.1.1

### DESCRIPTION:

The JST24F-800CW triac is suitable for general purpose AC switching. It can be used as an ON/OFF function in applications such as heating regulation, induction motor starting circuits, for phase control operation in light dimmers, motor speed controllers. JST24F-800CW snubberless triac is especially recommended for use on inductive loads. By using an external plastic package, JST24F-800CW provides a rated insulation voltage of 2000 VRMS, complying with UL standards (File ref: E252906). Package TO-220F is RoHS compliant.

### MAIN FEATURES

### ABSOLUTE MAXIMUM RATINGS

| Parameter                                       | Symbol    | Value   | Unit |
|---|-----------|---------|------|
| Storage junction temperature range              | $T_{stg}$ | -40-150 |      |
| Operating junction temperature range            | $T_j$     | -40-125 |      |
| Repetitive peak off-state voltage (T B M N A e) |           |         |      |

# JST24F-800CW

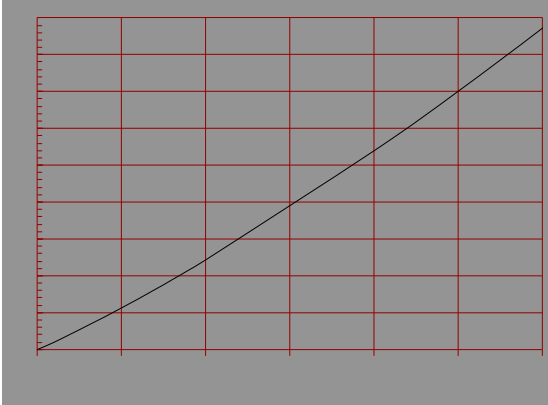


JieJie Microelectronics Co., Ltd.

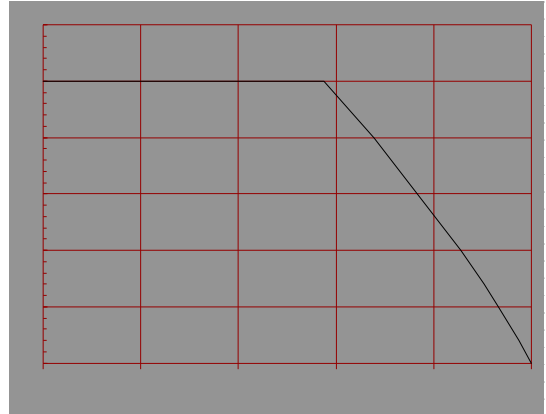
|                           |          |    |   |
|---------------------------|----------|----|---|
| Peak gate power           | $P_{GM}$ | 10 | W |
| Peak pulse voltage<br>(TP |          |    |   |



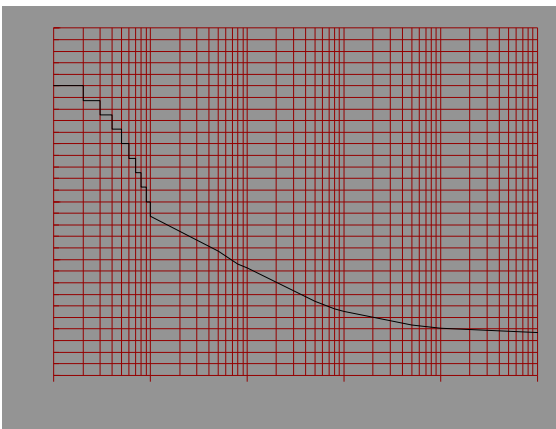
**FIG.1:** Maximum power dissipation versus RMS on-state current



**FIG.2:** RMS on-state current versus case temperature

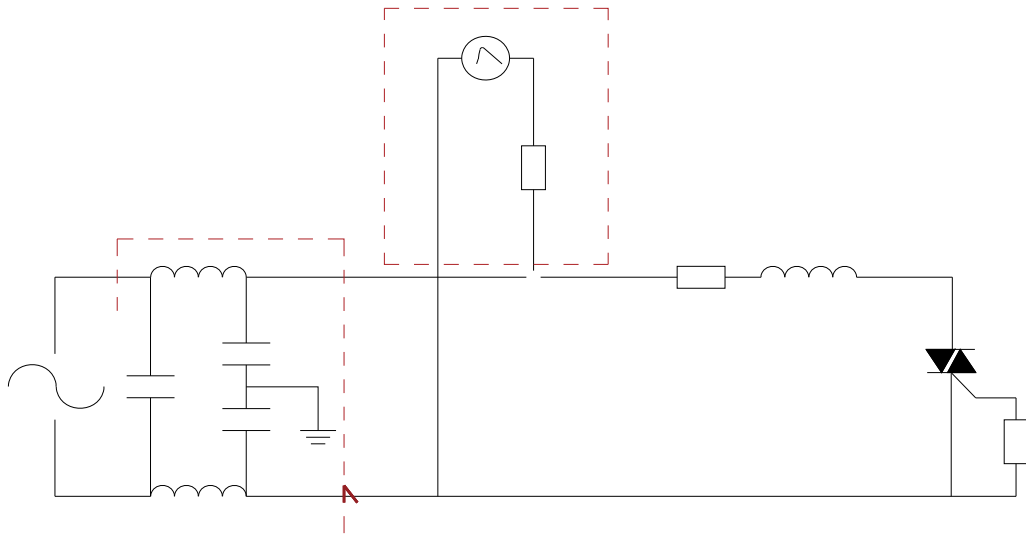


**FIG.3:** Surge peak on-state current versus number of cycles



**FIG.4:** On-state characteristics

FIG.7 Test circuit for inductive and resistive loads to IEC-61000-4-5 standards



**ORDERING INFORMATION**

| Order code          | Voltage<br>$V_{DRM}/V_{RRM}(V)$ | IGT(mA)   | Package            | Base qty.<br>(pcs) | Delivery<br>mode |
|---------------------|---------------------------------|-----------|--------------------|--------------------|------------------|
|                     |                                 | - -       |                    |                    |                  |
| <b>JST24F-800CW</b> | <b>800</b>                      | <b>35</b> | <b>TO-220F(IK)</b> |                    |                  |

**PACKAGE MECHANICAL DATA**



Information furnished in this document is believed to be accurate and reliable. However, Jiangsu JieJie Microelectronics Co., Ltd. assumes no responsibility for the consequences of use without consideration for such information nor use beyond it. Information mentioned in this document is subject to change without notice, apart from that when an agreement is signed, Jiangsu JieJie complies with the agreement.

Products and information provided in this document have no infringement of patents. Jiangsu JieJie assumes no responsibility for any infringement of other rights of third parties which may result from the use of such products and information. This document supersedes and replaces all information previously supplied.



is a registered trademark of Jiangsu JieJie Microelectronics Co., Ltd.

Copyright © 2025 Jiangsu JieJie Microelectronics Co., Ltd. All rights reserved.