



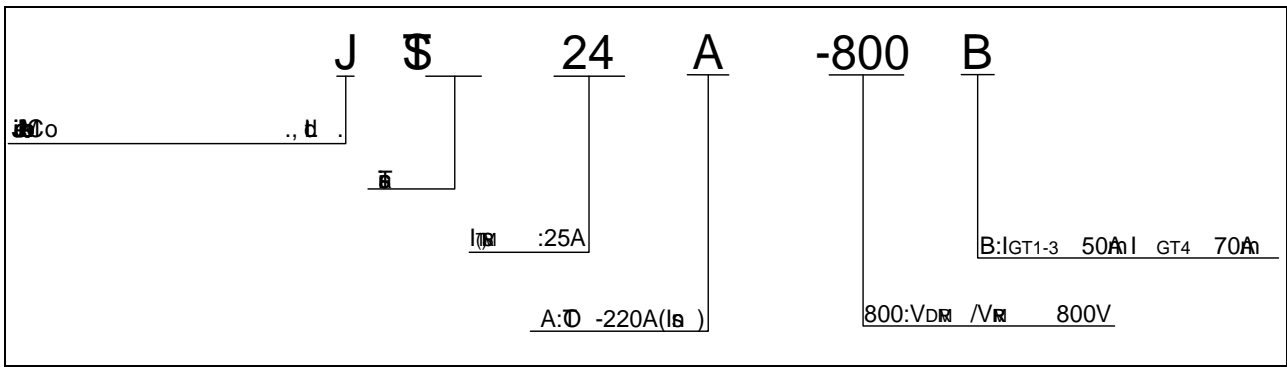
 ( $T_j=25$ ; $\rho$ - $\rho$ - FIG.7)	$V_p$	2	$\mu$
--	-------	---	-------

ELECTRICAL CHARACTERISTICS ( $T_j=25$  )

Symbol	Test Condition	Quadrant	Value	Unit
$I_{GT}$	$V_D=12V$ $L=33$	- -	50	$\mu A$
			70	

$V_{GT}$

ORDERING INFORMATION



MARKING

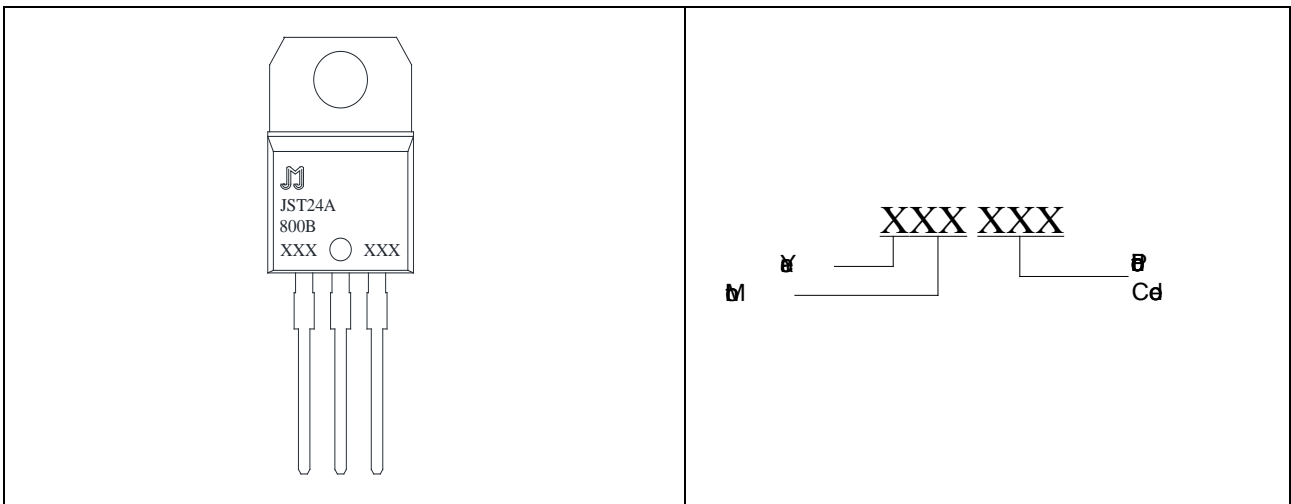
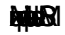


FIG.1: 

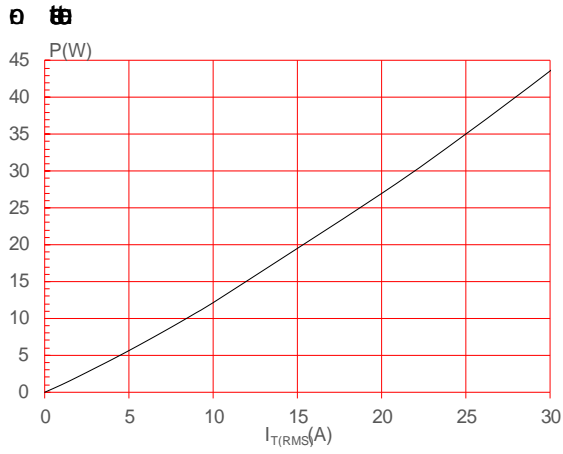



FIG.3: 



FIG.2:  - 

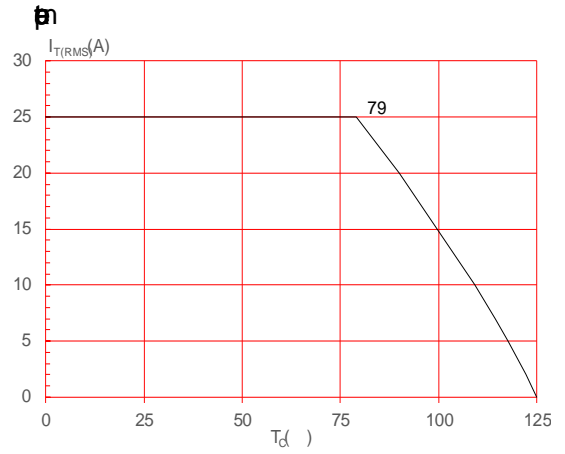
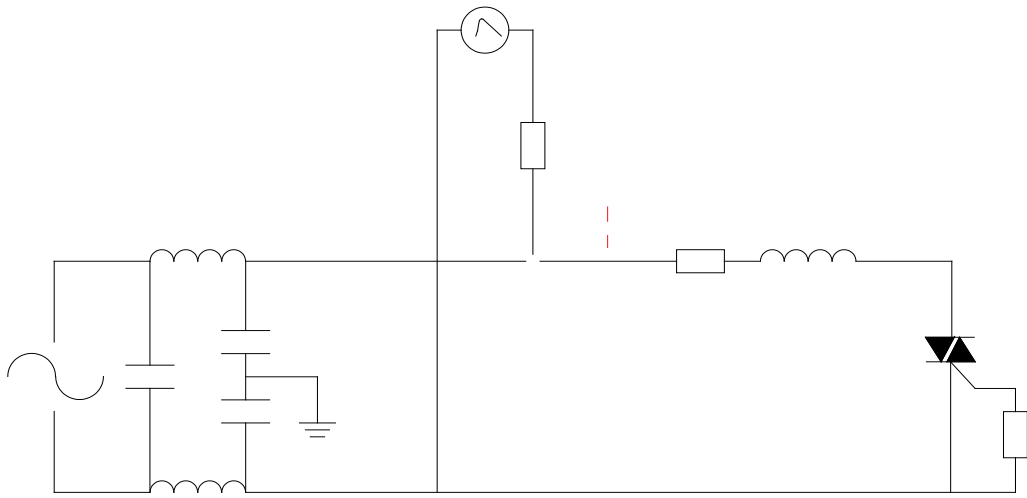


FIG.4:  - 



**ORDERING INFORMATION**

Order code	Voltage $V_{DRM}/V_{RRM}$ (V)	IGT(mA)		Package	Base qty. (pcs)	Delivery mode
		-	-			

PACKAGE MECHANICAL DATA



© 2025 JieJie Microelectronics Co., Ltd.

All rights reserved. No part of this document may be reproduced without prior written permission from JieJie Microelectronics Co., Ltd.

For more information, please contact:

Marketing Department

Address:

Room 101, Building 10

100000, Beijing, China

Phone:

+86-10-68528666

Fax:

+86-10-68528666

E-mail:

sales@jjwdz.com

Website:

http://www.jjwdz.com

© 2025 JieJie Microelectronics Co., Ltd.

All rights reserved. No part of this document may be reproduced without prior written permission from JieJie Microelectronics Co., Ltd.

For more information, please contact:

Marketing Department

Address:

Room 101, Building 10

100000, Beijing, China

Phone:

+86-10-68528666

Fax:

+86-10-68528666

E-mail:

sales@jjwdz.com

Website:

http://www.jjwdz.com

5