



JST16A-600BW 16A TRIAC

Rev.A.1.2

DESCRIPTION:

The JST16-600BW triac is suitable for  
 switching household loads  
 has a maximum RMS current of  
 16A at 25°C. The JST16-600BW  
 triac is suitable for switching  
 household loads. The maximum  
 RMS current is 16A at 25°C.  
 The JST16-600BW triac is suitable  
 for switching household loads.  
 The maximum RMS current is 16A  
 at 25°C.

MAIN FEATURES

ABSOLUTE MAXIMUM RATINGS

| Parameter   | Symbol     | Value   | Unit |
|---|------------|---------|------|
| Storage temperature   | $T_{stg}$  | -40-150 | °C   |
| Operating temperature   | $T_j$      | -40-125 | °C   |
| Repetitive peak forward voltage<br>( $I_T = 10A, f = 25Hz$ )    | $V_{DRM}$  | 600     | V    |
| Repetitive peak reverse voltage<br>( $T_j = 25°C$ )             | $V_{RRM}$  | 600     | V    |
| RMS on-state current<br>( $V_{TM} = 200V, t = 25ms$ )           | $I_T(RMS)$ | 16      | A    |
| Non-repetitive surge current<br>( $f_{avg} = 200Hz, t = 25ms$ ) | $I_{TSM}$  | 160     | A    |
| Non-repetitive surge current<br>( $f_{avg} = 100Hz, t = 25ms$ ) |            |         |      |

|          |   |   |          |    |   |
|----------|---|---|----------|----|---|
| $P_{GM}$ | k | atw   | $P_{GM}$ | 10 | W |
| $P_{GM}$ | k | saq<br>( $T_j=25$ ; -rti ti yof -bt; FIG.7) | V        | 4  |   |

k

**ELECTRICAL CHARACTERISTICS** ( $T_j=25$  u

| Symbol   | Test Condi                                   | Qdrant | Value |    | Uni |
|----------|--|--------|-------|----|-----|
| $I_T$    | $V_D = 12V$ $R_L = 33$                       | - -    | MX .  | 50 | m   |
| $V_{GT}$ |  | - -    | MX .  | 1  | V   |
| $V_{GD}$ | $V_D = V_{DRM}$ $T_j = 125$<br>$R_L = 3.3$ k | - -    | MIN.  | 0  | V   |



FIG.1: Maximum  
output current

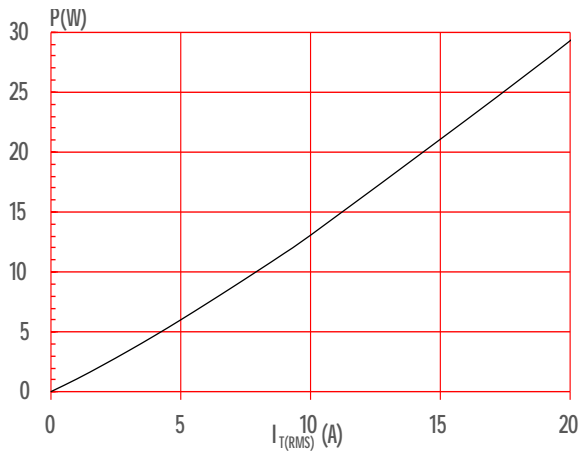


FIG.3: Signal  
knot

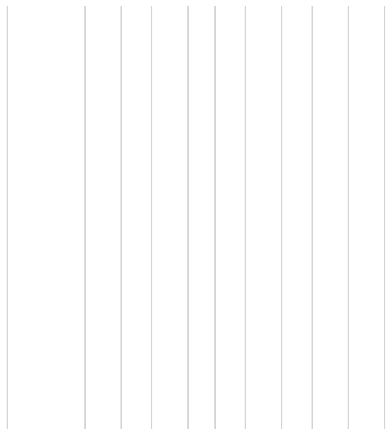


FIG.2: RMS output current  
limitation

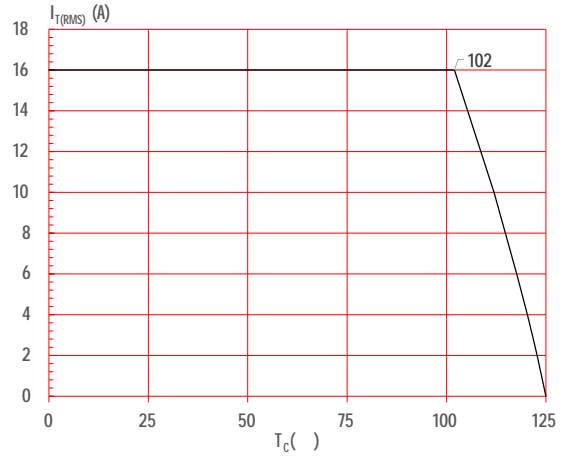
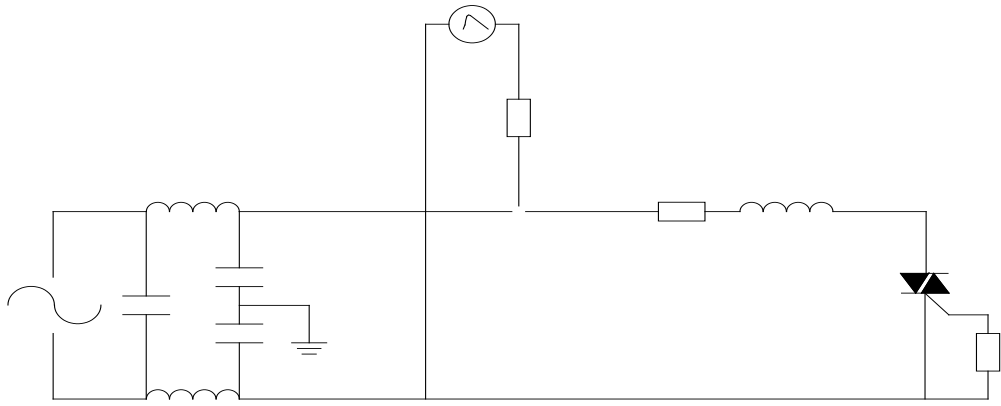
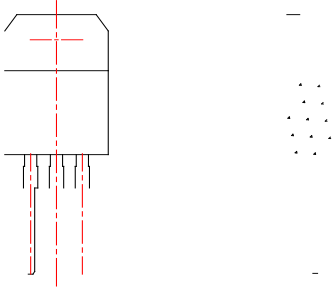



FIG.4: Output characteristic  
curve



**JST16A-600BW**

PACKAGE MECHANICAL DATA



I n  
 Jia n  
 ó s i n t o c o n  
 i n  
 \$ g n  
 P o u c s a n  
 Jia n  
 w i e y h e f o n h e s ó s c o u h c e i This o c m  
 a t i d . n  
 i s a g i t e d e r k ó Jia  
 ' 2026 Jia C n