



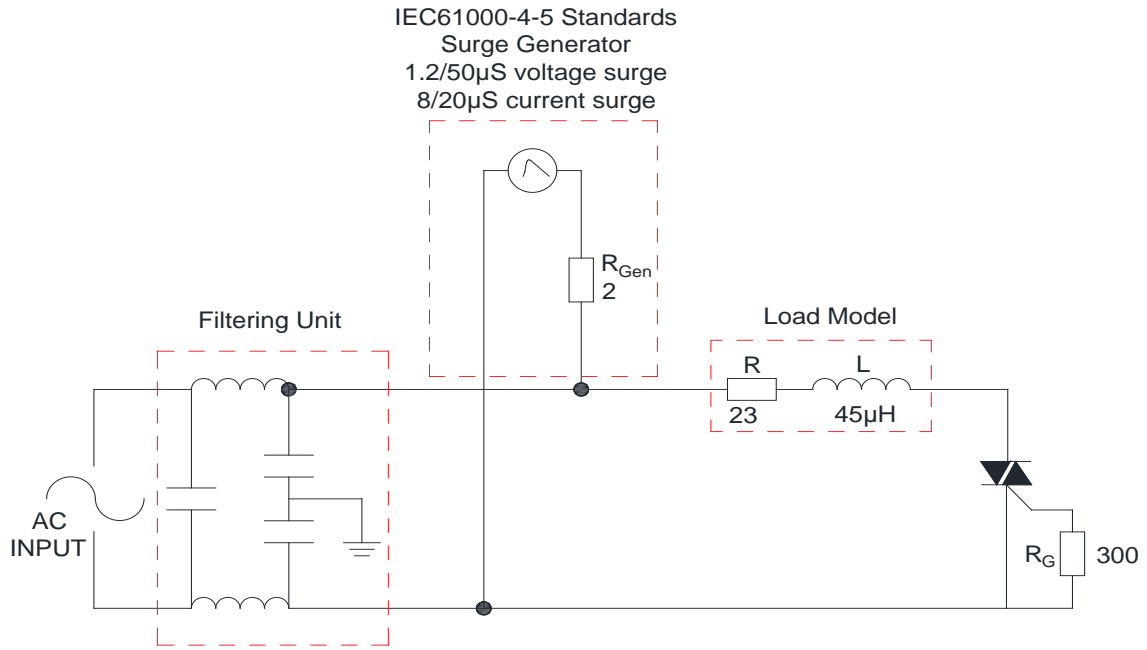
JST134C-800E 4A TRIAC

Rev.A.1.1

DESCRIPTION:

The JST134C-800E triac is suitable for general purpose AC switching. It can be used as an ON/OFF function in applications such as heating regulation, induction motor starting circuits, for phase control operation in light dimmers, motor speed controllers. From T2 terminals to external h8d [(T3in)][(T3i)oOng IO Tc 0 Tw 3.16 996d [(in)(P.007 Tc -0.004 Tw 2.01 0 Td [(E)-3 a(h

FIG.7 Test circuit for inductive and resistive loads to IEC-61000-4-5 standards



PACKAGE MECHANICAL DATA



JST134C-800E

JieJie M