

ELECTRICAL CHARACTERISTICS (unless otherwise specified)

| Symbol | Test Condition | Quadrant | Value | | Unit |
|----------|---------------------------------------|----------|-------|-----|------|
| I_{GT} | $V_D=12V$ $R_L=33$ | - - | MAX. | 5 | mA |
| | | | | 10 | |
| V_{GT} | | ALL | MAX. | 1 | V |
| V_{GD} | $V_D=V_{DRM}$ $T_j=125$ $R_L=3.3k$ | ALL | MIN. | 0.2 | V |
| I_L | $I_G=1.2I_{GT}$ | - - | MAX. | 10 | mA |
| | | | | 20 | |
| I_H | $I_T=100mA$ | | MAX. | 7 | mA |
| dV/dt | $V_D=400V$ Gate Open $T_j=110$ | | MIN. | 120 | V s |

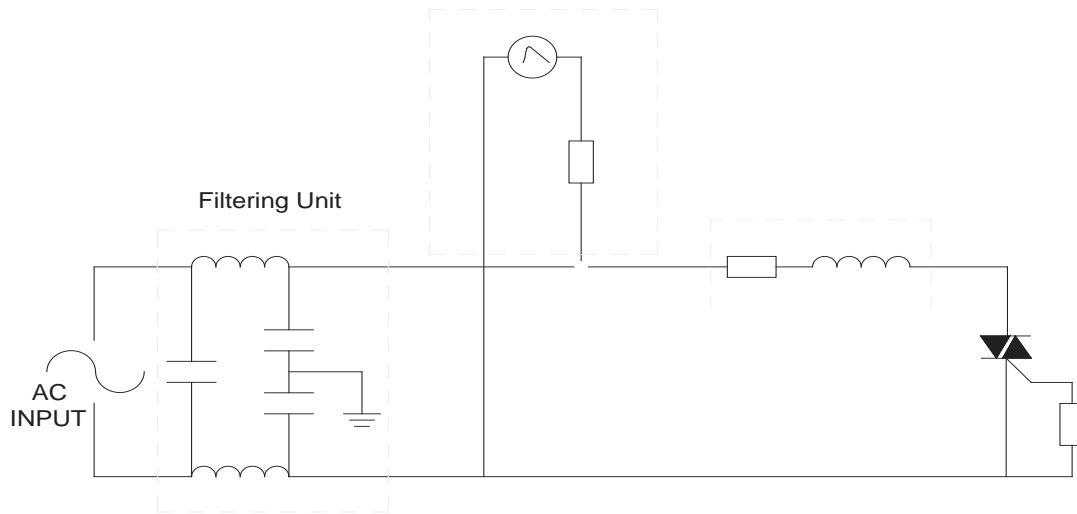
(dV/dt)_c (dI/dt)_c=1.8

FIG.1: Maximum power dissipation versus RMS on-state current

FIG.2: RMS on-state current versus case temperature

FIG.7 ÖTest circuit for inductive and resistive loads to IEC-61000-4-5 standards

IEC61000-4-5 Standards



ORDERING INFORMATION

| Order code | Voltage V_{DRM}/V_{RRM} (V) | IGT(mA) | | Package | Base qty. (pcs) | Delivery mode |
|--------------|----------------------------------|---------|----|---------|--------------------|------------------|
| | | - | - | | | |
| JST134C-600D | 600 | 5 | 10 | TO-220C | 50 | Tube |

Document Revision History

| Date | Revision | Changes |
|--------------|----------|--------------------------------|
| Apr.14, 2023 | A.1.0 | Last updated |
| Oct.16, 2025 | A.1.1 | Revise PACKAGE MECHANICAL DATA |

PACKAGE MECHANICAL DATA



Information furnished in this document is believed to be accurate and reliable. However, Jiangsu JieJie Microelectronics Co., Ltd assumes no responsibility for the consequences of use without consideration for such information nor use beyond it. Information mentioned in this document is subject to change without notice, apart from that when an agreement is signed, Jiangsu JieJie complies with the agreement.

Products and information provided in this document have no infringement of patents. Jiangsu JieJie assumes no responsibility for any infringement of other rights of third parties which may result from the use of such products and information. This document supersedes and replaces all information previously supplied.

is a registered trademark of Jiangsu JieJie Microelectronics Co., Ltd.

Copyright © 2025 Jiangsu JieJie Microelectronics Co., Ltd. All rights reserved.