



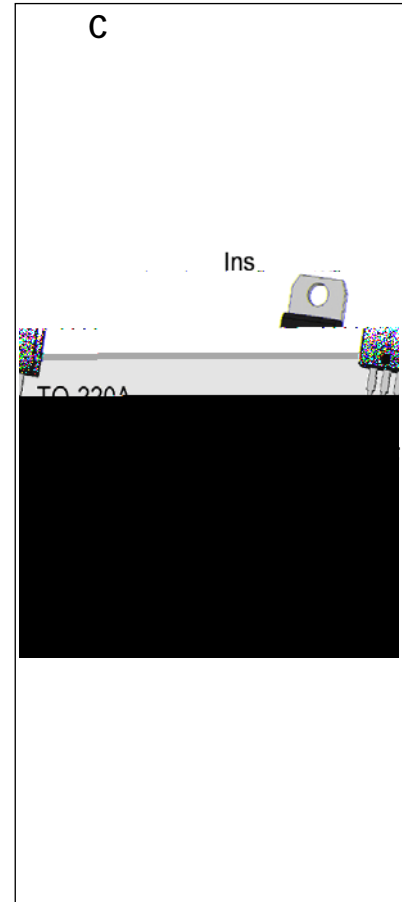
JST04A-600TW 4A TRIAC

Rev.A.1.1

DESCRIPTION:

The JST04A600TW triac is suitable for general purpose AC switching. It can be used as an ON/OFF function in applications such as heating regulation, inductive motor starting circuit, for phase control operation in light dimmers, motor speed controllers. JST04A600TW triac is specially recommended for use in inductive loads. It can be driven directly through the MCU I/O port. By using an internal ceramic pad, JST04A600TW provides a rated inductance of 2500 VRMS, complying with UL standards.

Package TO220A is RoHS compliant



MAIN FEATURES

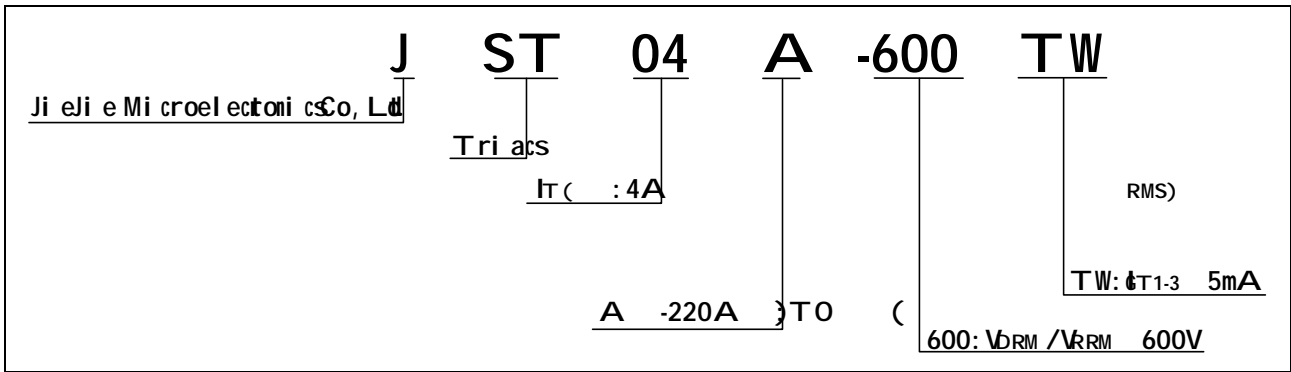
Symbol	Value	Unit
$I_T$	4	A (RMS)
$V_{DRM} / V_{RRM}$	600	V
$I_{GT} / /$	5/5/5	mA

ABSOLUTE MAXIMUM RATINGS

Parameter	Symbol	Value	Unit
Storage junction temperature range	$T_g$	-40-150	
Operating junction temperature range	$T_j$	-40-125	
Repetitive peak off-state voltage ( $f_j=25$ )	$V_{DRM}$	600	V
Repetitive peak reverse voltage ( $f_j=25$ )	$V_{RRM}$	600	V
RMS on-state current ( $I_c=100$ )	$I_T$	4	T A (RMS)
Non repetitive surge peak on-state current ( $p=20ms, T_j=25$ )	$I_{TSM}$	40	A
Non repetitive surge peak on-state current ( $p=16.6ms, T_j=25$ )		44	
Rated energy for fusing ( $p=10ms, T_j=25$ )	$I^2t$	8	t A <sup>2</sup> s
Critical rate of rise of on-state current ( $I_G=2 \times I_{GT}, f=100Hz, T_j=125$ )	$di/dt$	50	A s



ORDERING INFORMATION



MARKING

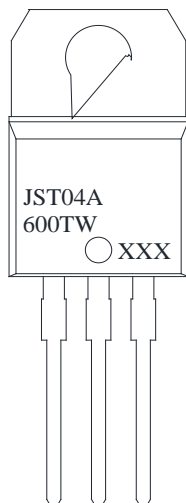


FIG.1: Maximum power dissipation vs RMS on-state current

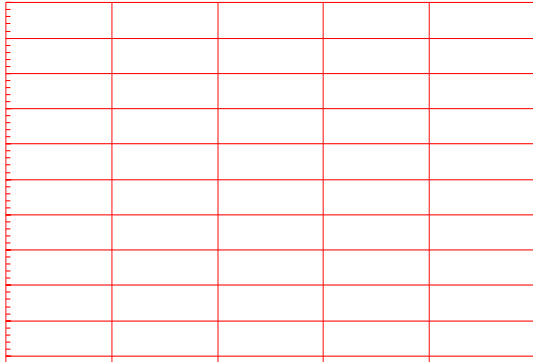


FIG.2: RMS on-state current vs temperature

FIG. 7 Test circuit for inductance and resistance loads IEC 61000-4-5 standards



	Voltage DRM/V (V)		Base qty.	mode
JST04A-00T	600	5	TO-220A(Ins)	50 Tube

Oct11, 2025

A1.1

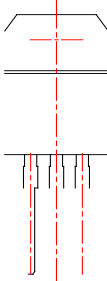
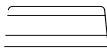
Revis PA

CKA

GE MECHA

N

PACKAGE MECHANICAL DATA



Information provided in this document is believed to be accurate and reliable. However, JieJie Microelectronics Co., Ltd. does not assume any responsibility for the consequences of any omissions or errors in this information or for any changes in the information mentioned in this document. Without prior written agreement, JieJie Microelectronics Co., Ltd. does not assume any responsibility for the consequences of any omissions or errors in this information or for any changes in the information mentioned in this document.

Products and information provided in this document have no infringement of patents. JieJie Microelectronics Co., Ltd. does not assume any responsibility for any infringement of other rights of third parties which may result from the use of such products and information. This document supersedes and replaces all information previously supplied.

 is a registered trademark of JieJie Microelectronics Co., Ltd.

Copyright © 2025 JieJie Microelectronics Co., Ltd. All rights reserved.

All rights reserved.