



T2535H-8A 25A TRIAC

Rev.A.1.1

DESCRIPTION:

1. 符合IEC 60747-6-2 标准
 2. 符合GB 19830-2005 标准
 3. 符合RoHS 标准
 4. 符合REACH 标准
 5. 符合UL 1571 标准
 6. 符合VDE 0884 标准
 7. 符合EN 60747-6-2 标准
 8. 符合IEC 60747-6-2 标准
 9. 符合GB 19830-2005 标准
 10. 符合RoHS 标准
 11. 符合REACH 标准
 12. 符合UL 1571 标准
 13. 符合VDE 0884 标准
 14. 符合EN 60747-6-2 标准
 15. 符合IEC 60747-6-2 标准

MAIN FEATURES

ABSOLUTE MAXIMUM RATINGS

Parameter	Symbol	Value	Unit
结温	T_j	-40-150	
存储温度	T_s	-40-150	
反向峰值电压 ($I_T = 0$)	V_{RM}	80	V
反向峰值电压 ($I_T = 25A$)	V_{RM}	80	V
反向平均电流 ($V_{RM} = 101V$)	I_{RM}	2	A

V_{DD}	V_{DD})	P_{DD}	1	W
P_{DD}		P_{DD}	10	W

T2535H-8A

 JieJie Microelectronics Co., Ltd.

ORDERING INF-.2s76.49 (.cA)86 (wwT3.7 (.cG)-5 ON-4.3 (d)]TJ 0 Tc 0 Td Do (/InI






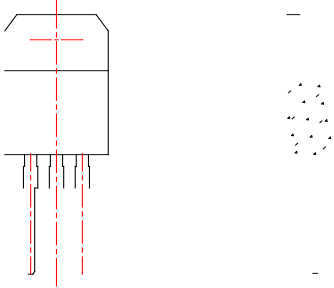
FIG.1: 
a 

FIG.2:  - 
b 

JieJie M



PACKAGE MECHANICAL DATA



© 2014 JieJie Microelectronics Co., Ltd.
All rights reserved.
This document is the property of JieJie Microelectronics Co., Ltd.
No part of this document may be reproduced, stored in a retrieval system, or transmitted, in any form or by any means, without the prior written permission of JieJie Microelectronics Co., Ltd.