



## T0635H-6E 6A TRIAC

Rev.A.1.1

### DESCRIPTION:

The T0635H-6E triac is suitable for general purpose AC switching. It can be used as an ON/OFF function in applications such as heating regulation, induction motor starting circuits, for phase control operation in light dimmers, motor speed controllers. Compared to traditional triacs, T0635H-6E provides a very high switching capability up to junction temperatures of 150°C. Package TO-263 is RoHS compliant.

### MAIN FEATURES

### ABSOLUTE MAXIMUM RATINGS

Parameter	Symbol	Value	Unit
Storage junction temperature range	$T_{stg}$	-40-150	

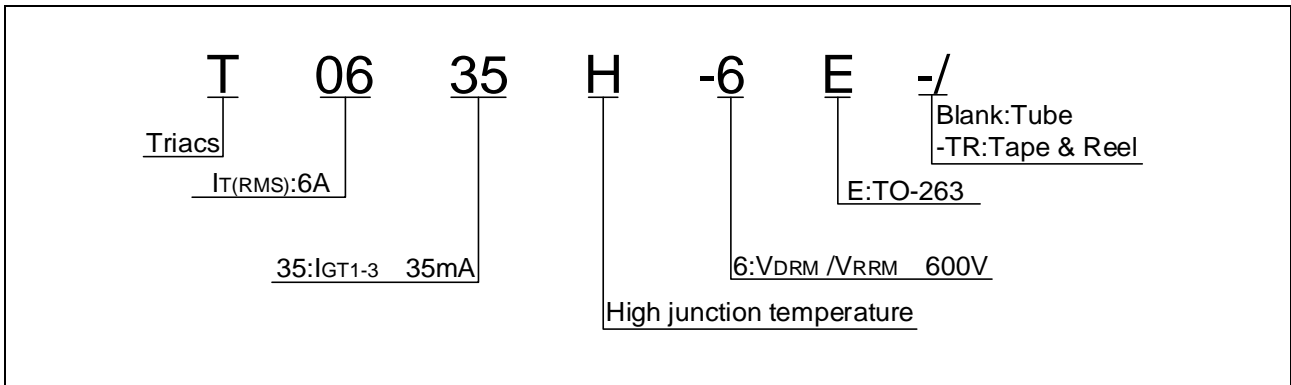
Operating junction temperature range: -40 to 150°C (S)1 (t)2 - 6.1 are rangt

Peak pulse voltage ( $T_j=25$ ; non-repetitive, off-state; FIG.8)	$V_{pp}$	3	kV
--	----------	---	----

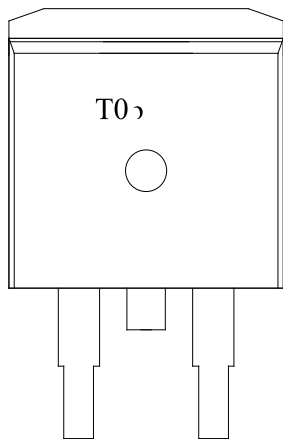
**ELECTRICAL CHARACTERISTICS** ( $T_j=25$  unless otherwise specified)

**Symbol**

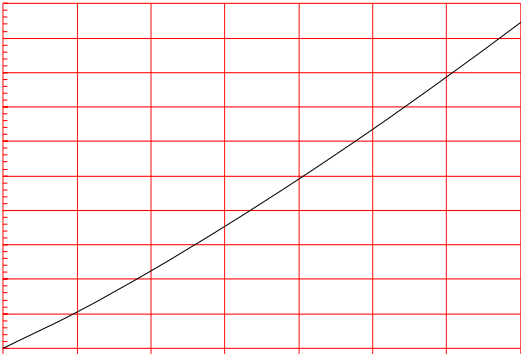
ORDERING INFORMATION



MARKING



**FIG.1:** Maximum power dissipation versus RMS on-state current



**FIG.2:** RMS on-state current versus case temperature

FIG.7: Relative variations of gate trigger current, holding current and latching current versus junction temperature 0.5

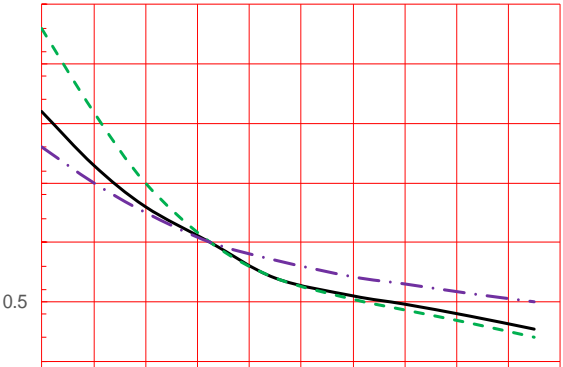
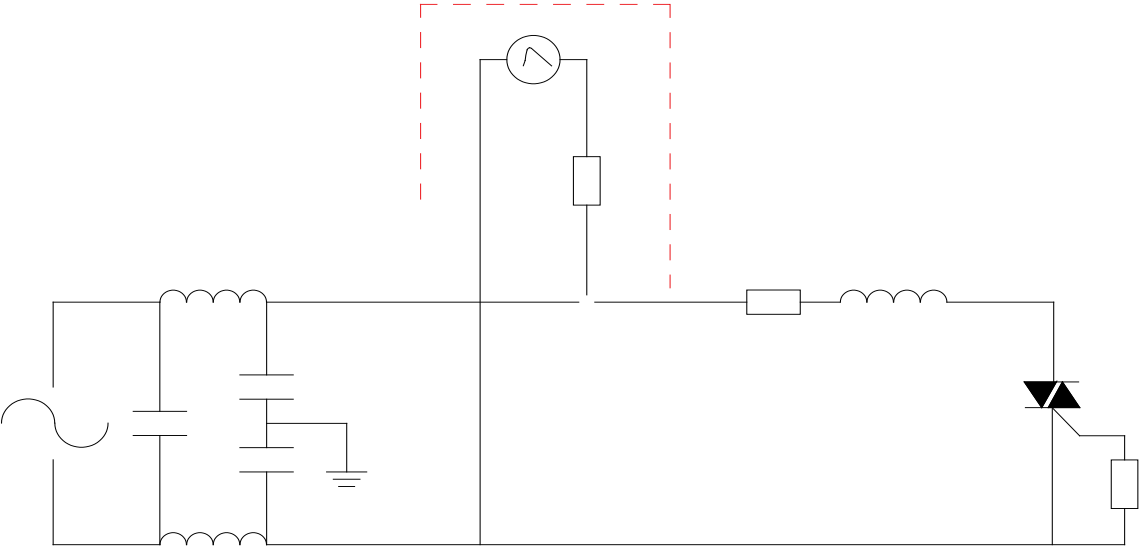


FIG.8 Test circuit for inductive and resistive loads to IEC-61000-4-5 standards







DELIVERY MODE

