



JR0205U 2A SCR

Rev.A.2.1

DESCRIPTION:

The JR0205U SCR with the parallel resistor between Gate and Cathode, R<sub>GK</sub>=10~80k is especially recommended for use on straight hair, igniter, anion generator, etc. Package TO-92 is RoHS compliant.

MAIN FEATURES

Symbol	Value	Unit
I <sub>T(RMS)</sub>		A
V <sub>DRM</sub> /V <sub>RRM</sub>	600	V
I <sub>GT</sub>	200	μA

ABSOLUTE MAXIMUM RATINGS

Parameter	Symbol	Value	Unit
Storage junction temperature range	T <sub>stg</sub>	-40-150	
Operating junction temperature range	T <sub>j</sub>	-40-125	
Repetitive peak off state voltage (T <sub>j</sub> =25 °C)	V <sub>DRM</sub>	600	V
Peak off state voltage (T <sub>j</sub> =25 °C)	V <sub>RRM</sub>	600	V
Average current	I <sub>T(AV)</sub>	1.3	A
RMS current	I <sub>T(RMS)</sub>	2	A
Surge current	I <sub>TSM</sub>	20	A
Peak surge current		22	
I <sup>2</sup> t value for fusing (t <sub>p</sub> =22ms, T <sub>j</sub> =25 °C)	I <sup>2</sup> t	2	A <sup>2</sup> s
Critical rate of rise of on state current (I <sub>GI</sub> )			

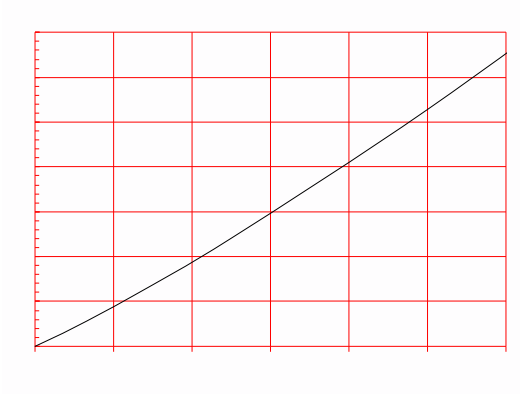
Peak gate power	$P_{GM}$	2	W
Peak pulse voltage ( $T_j$ )			

**JR0205U**

 **JieJie Microelectronics Co., Ltd.**

**ORDERING INFORMATION**

**FIG.1:** Maximum power dissipation versus RMS on-state current



**FIG.2:** RMS on-state current versus case temperature

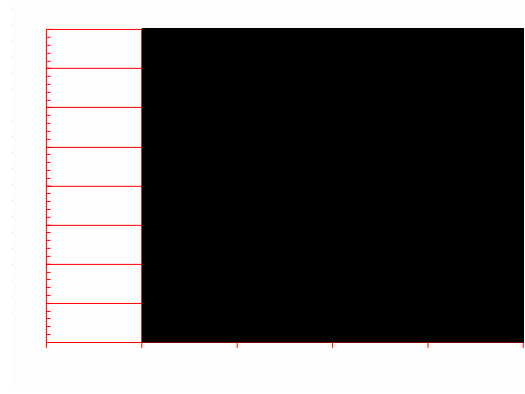
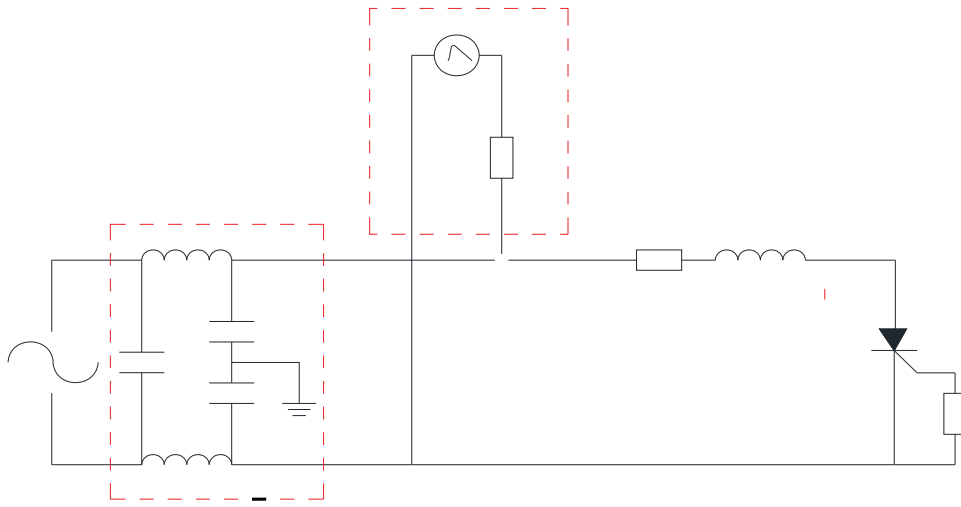


FIG.7 Test circuit for inductive and resistive loads to IEC-61000-4-5 standards



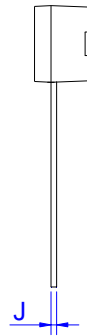
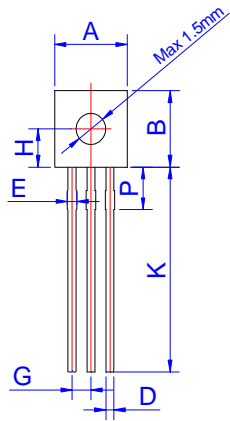
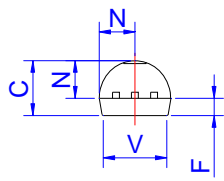
**ORDERING INFORMATION**

Order code	Voltage V <sub>DRM</sub> /V <sub>RRM</sub> (V)	IGT(μA)	Package	Base qty. (pcs)	Delivery mode
JR0205U	600	200	TO-92	1,000	Bulk Pack
JR0205U-TR				2,000	Tape & Reel

**Document Revision History**

Date	Revision	Changes
Apr.10, 2023	A.1.0	Last update
Mar.27, 2025	A.2.0	Renew PACKAGE MECHANICAL DATA
Sept.28, 2025	A.2.1	Revise PACKAGE MECHANICAL DATA

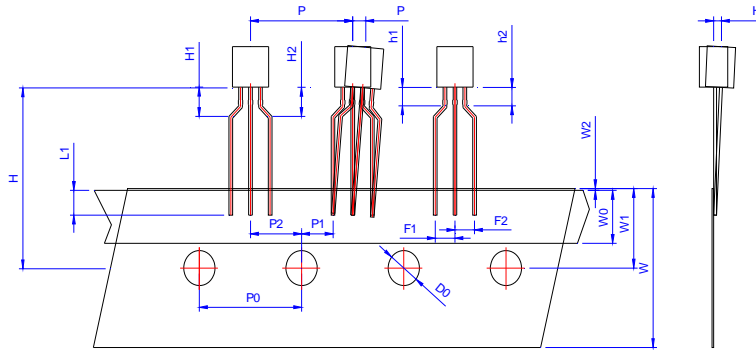
PACKAGE MECHANICAL DATA



Ref.	Dimensions			Inches	V
	Min.	Typ.	Ma		

DELIVERY MODE

PACKAGE	OUTLINE	BAG (PCS)	INNER BOX (PCS)	CARTON BOX (PCS)
TO-92	Bulk Pack	1,000	10,000	50,000



Ref.	Dimensions					
	Millimeters			Inches		
	Min.	Typ.	Max.	Min.	Typ.	Max.
P	12.40	12.70	13.00	0.488	0.500	0.512
P0	12.40	12.70	13.00	0.488	0.500	0.512
P1	3.55	3.85	4.15	0.140	0.152	0.163
P2	5.95	6.35	6.75	0.233	0.250	0.265
P	-1.00	0	1.00	-0.039	0	0.039
F1 F2	2.30	2.50	2.70	0.090	0.098	0.106
F1-F2	-0.10	0	0.10	-0.004	0	0.004
W	17.50	18.00	19.00	0.689	0.709	0.748
W0	5.50	6.00	6.50	0.217	0.236	0.256
W1	8.50	9.00	9.50	0.335	0.354	0.374
W2			1.00			0.039
D0	3.80	4.00	4.20	0.150	0.157	0.165
H	-1.00	0	1.00	-0.039	0	0.039
L1	2.50			0.098		
H	18.00	19.00	20.00	0.709	0.748	0.787
H1 H2			3.00			0.119
H1-H2	-0.50		0.50	-0.020		0.020
h1 h2			1.00			0.040
h1-h2	-0.20		0.20	-0.008		0.008

PACKAGE	OUTLINE	REEL (PCS)	INNER BOX (PCS)	CARTON BOX (PCS)
TO-92	Tape & Reel	/	2,000	20,000

Information furnished in this document is believed to be accurate and reliable. However, Jiangsu JieJie Microelectronics Co., Ltd. assumes no responsibility for the consequences of use without consideration for such information nor use beyond it. Information mentioned in this document is subject to change without notice, apart from that when an agreement is signed, Jiangsu JieJie complies with the agreement. Products and information provided in this document have no infringement of patents. Jiangsu JieJie assumes no responsibility for any infringement of other rights of third parties which may result from the use of such products and information. This document supersedes and replaces all information previously supplied.

 is a registered trademark of Jiangsu JieJie Microelectronics Co., Ltd. Copyright © 2025 Jiangsu JieJie Microelectronics Co., Ltd. All rights reserved.