

JIEJIE MICROELECTRONICS CO., LTD.

j

GM	10	W
pp		

ELECTRICAL CHARACTERISTICS $T_j=25$ unless otherwise specified)

Symbol	Test Condition	Value	Unit
I_{GT}			
I_{GT}			
I	$V_D=V_{DRM}$ $R_G=3.3k$	0.2V	
	$I_{GT} \pm 2.40$ mA		
t_{on}	$V_{D(on)}$ I_{GT}		
t_{off}	I_{GT} $A=200mA$ R_G		

V_{TO}	$I_{GT} \pm 23A$ p_{380}	$=25.6$	
R_D	Threshold voltage	$=10.57V$	
R_{DRM}		$=125$	
$R_{RRM T}$	$V_D=V_{BM}$ $V_R=V_{RM}$ $T=25$		

THERMAL RESISTANCES

Symbol	Parameter	Value	Unit
R_{jc}	junction to case (DC)	4.5	/W

FIG.1: Maximum power dissipation versus RMS on-state current

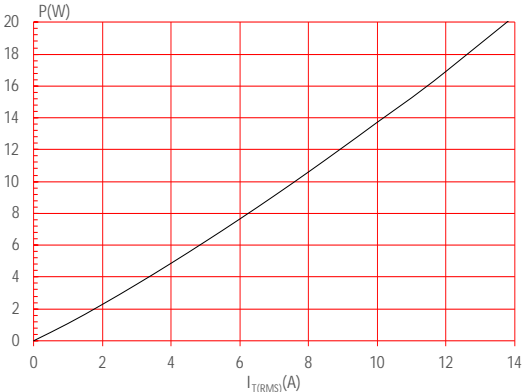


FIG.2: RMS on-state current versus case temperature

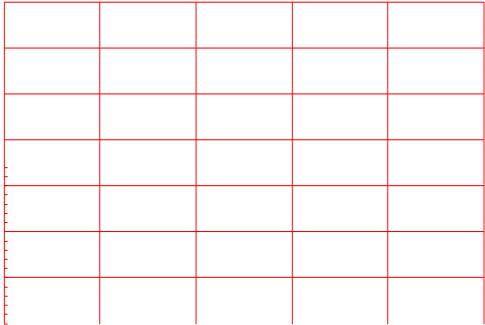


FIG.7: Relative variations of gate trigger current, holding current and latching current versus junction temperature

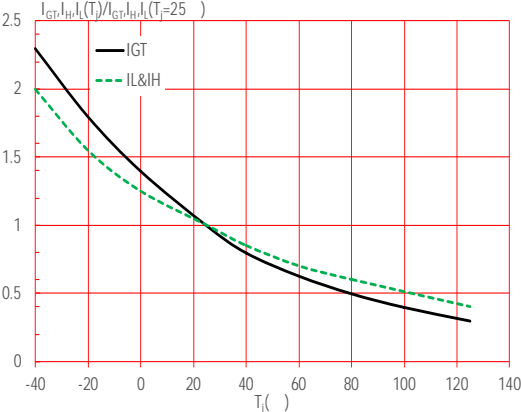
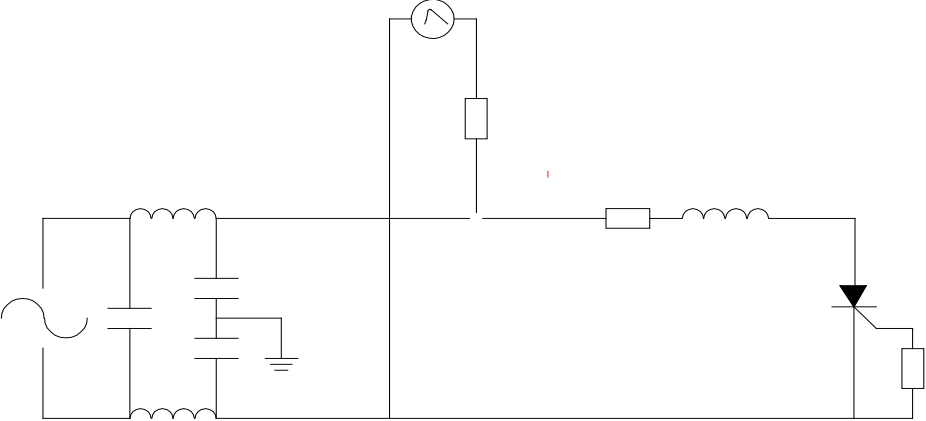


FIG.8: Test circuit for inductive and resistive loads to IEC-61000-4-5 standards.

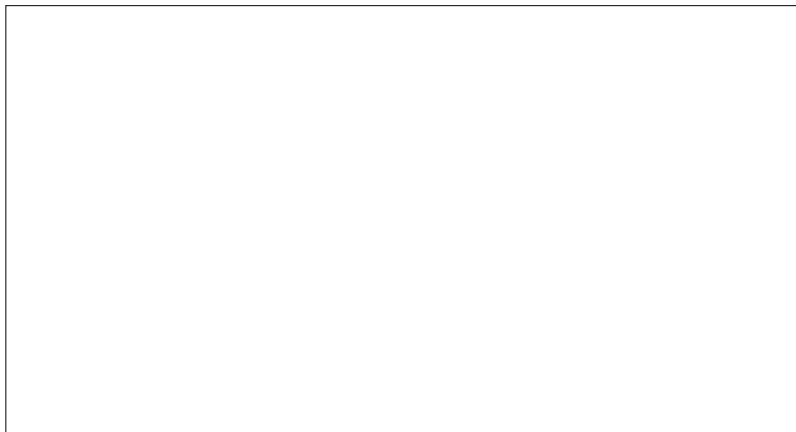


ORDERING INFORMATION

Order code	Voltage V_{DRM}/V_{RRM} (V)	
------------	----------------------------------	--

PACKAGE MECHANICAL DATA

Ref.	Dimensions					
	Millimeters			Inches		
	Min.	Typ.	Max.	Min.	Typ.	Max.
A	2.10		2.50	0.083		0.098
A2	0		0.15	0		0.006
B	0.66		0.86	0.026		0.034
C	0.40		0.60	0.016		0.024
D	5.90		6.30	0.232		0.248
E	6.40		6.80	0.252		0.268
G	4.47			0.053		0.65
G1	2.18		2.38	0.086		0.094
L						
L2				0.053		0.065



DELIVERY MODE

