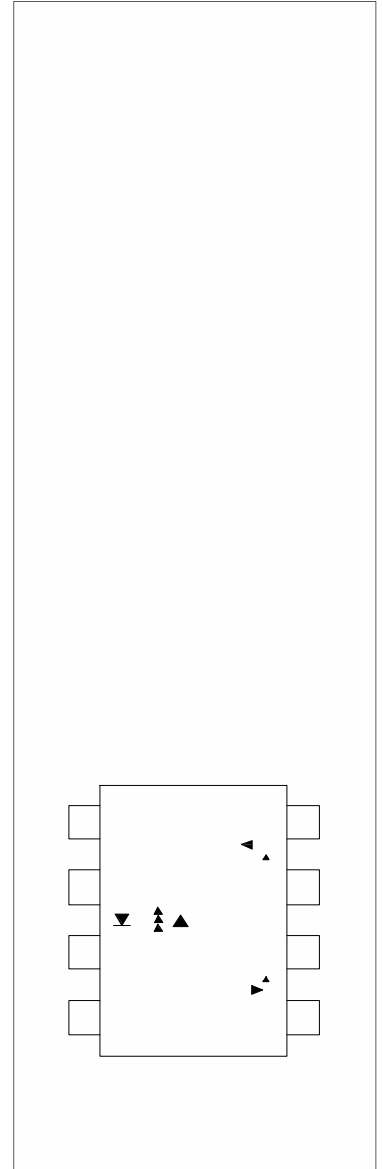




) -o#k@u@V

U ° @ 7- ° uyk-o



u u


.  
. .  
. .  
. .

° " \ Q y u - U ° @ y U k ° u @ 8 0 :

Parameter		Symbol	Value	Unit

V \ u : 100 s pulse, 100Hz frequency  
 V \ u : AC for 1minute, R.H.=40~60%

- Q # u k @ ° O # = ° k ° # u - k @ u @ o

Parameter	Symbol	Condition	Min.	Typ.	Max.	Unit
-----------	--------	-----------	------	------	------	------


--	--	--	--	--	--	--

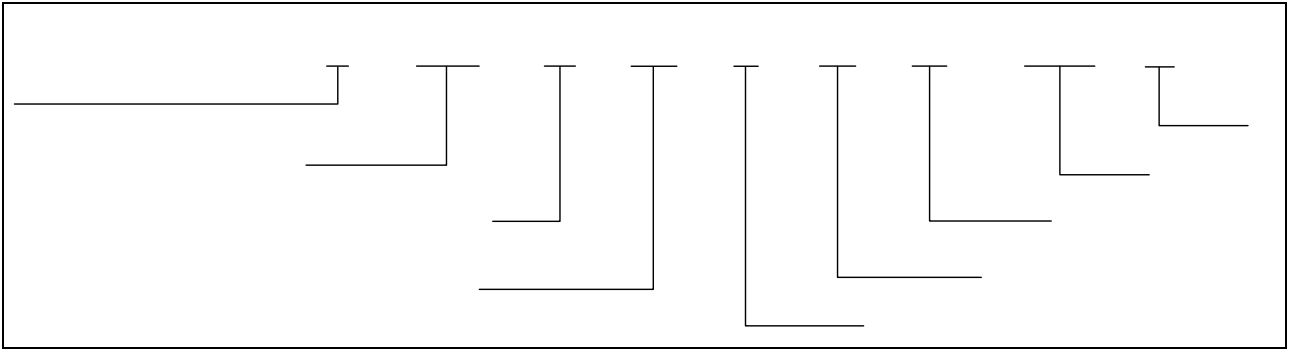
All Typical values at  $T_a=25$

$V_{in}$  : Input signal ( $f=25kHz, duty=50\%, tr=tf=5ns$  or less).  $C_L$  is less than 15 pF which includes probe and stray wiring capacitance.

$V_{cm}$  :  $CM_H$  is the maximum rate of fall of the common mode voltage that can be sustained with the output voltage in the logic high state ( $V_O = 2.6V$ ). **1**

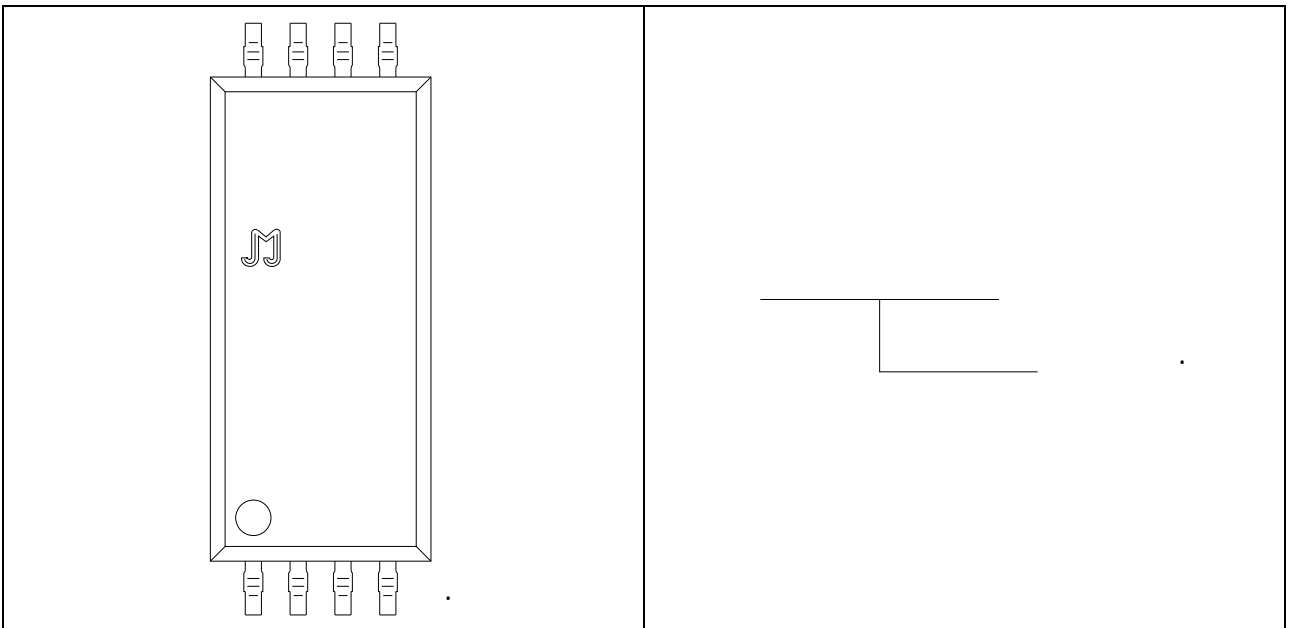
" .

U<sup>°</sup> kM<sup>8</sup>



h j	
\	j
None/R	1200Units/Reel

U<sup>°</sup> kM<sup>8</sup>



# #

FIG.1:

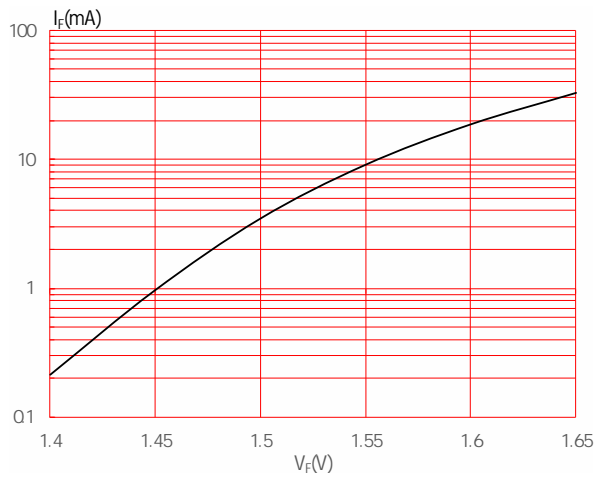


FIG.2:

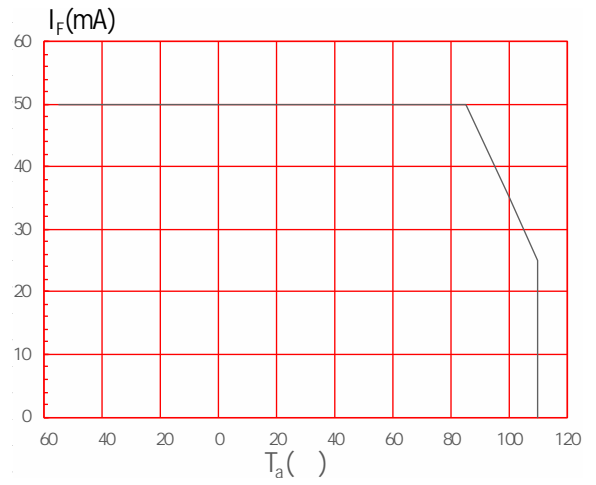


FIG.3:

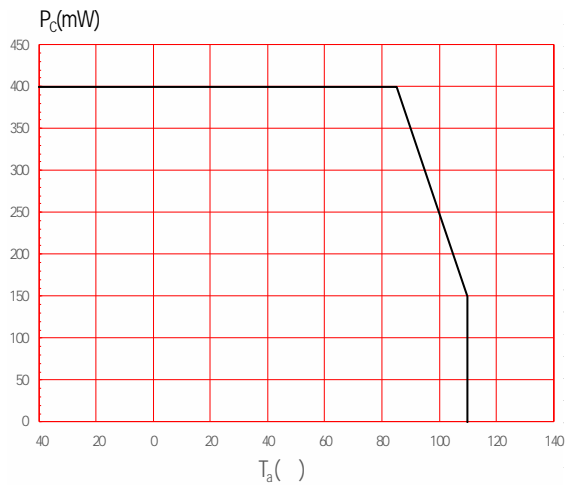


FIG.4:

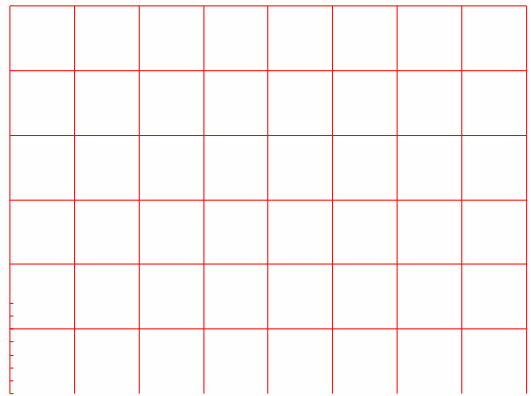
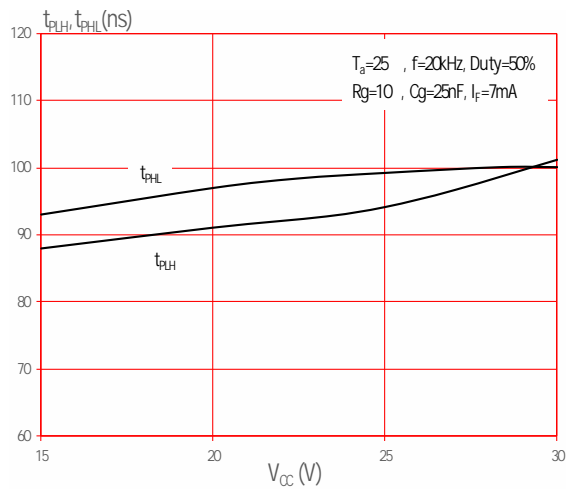
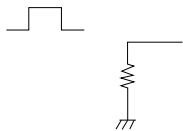




FIG.13:

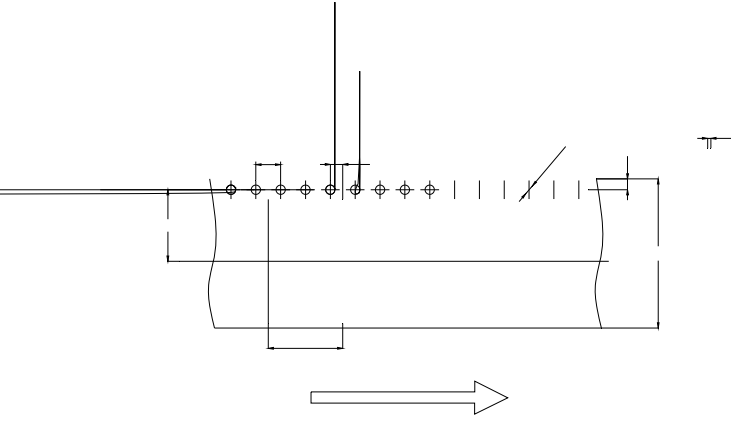


U #  
FIG.14:

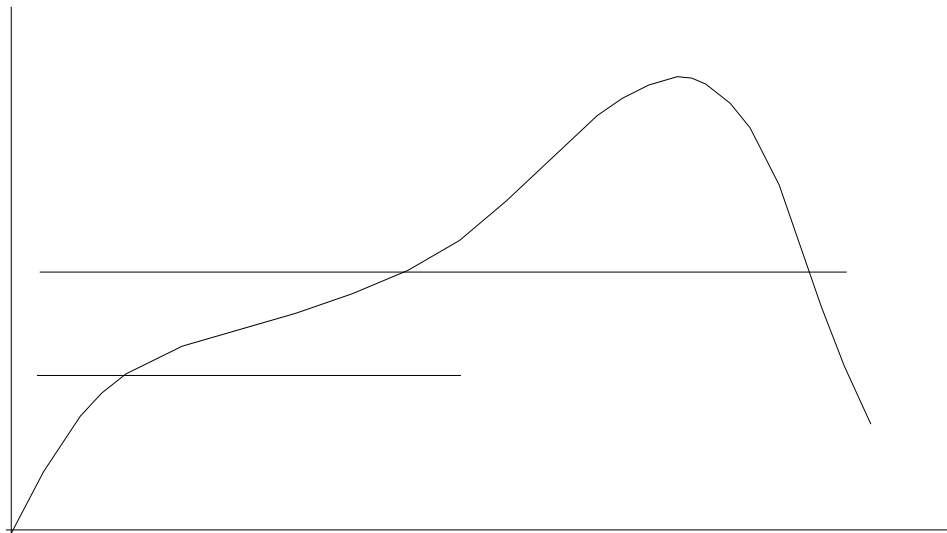
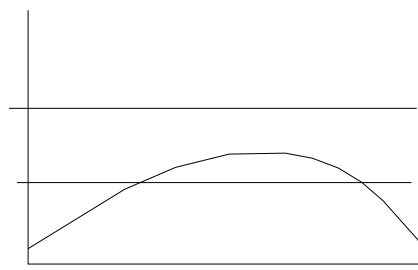
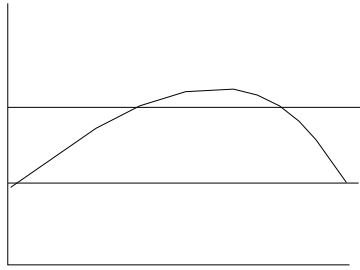




#° kk@k'ũ h- 'dh-#@#@° u@ Vo' )




k-70 ± @7 kU ° u@V



**JOCDA3AB**